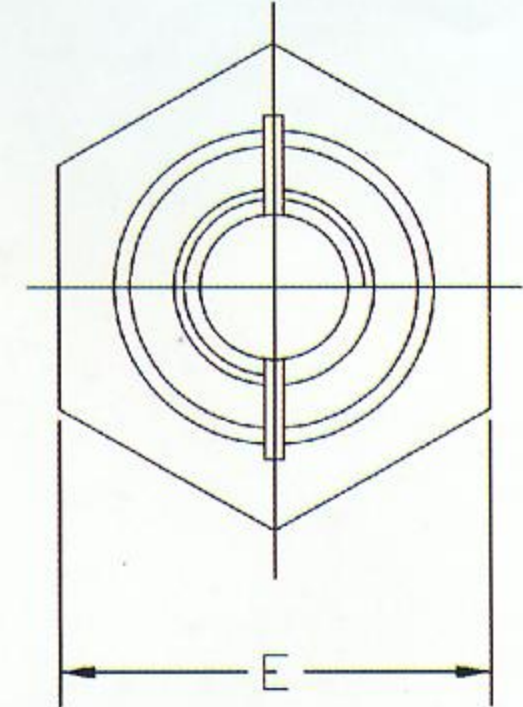
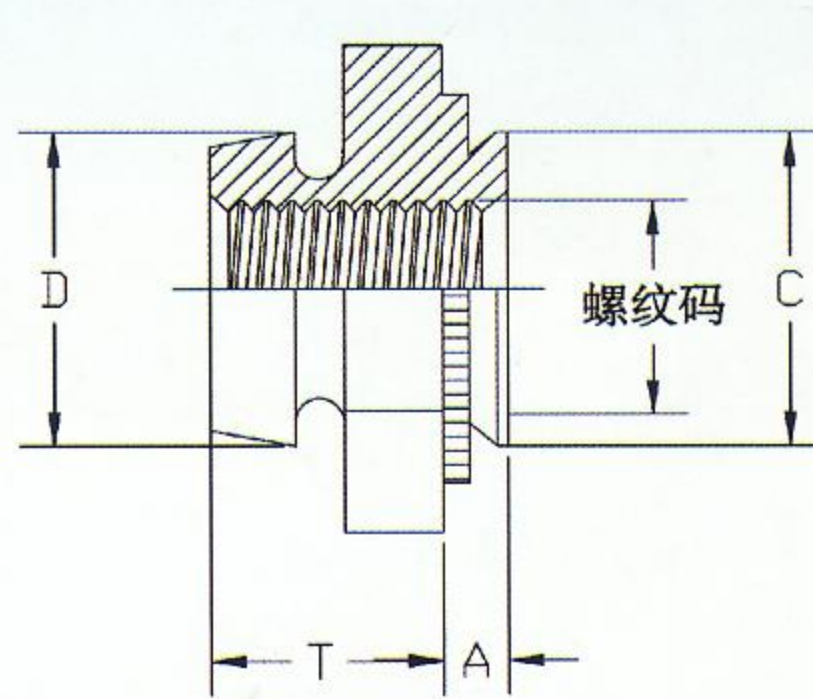
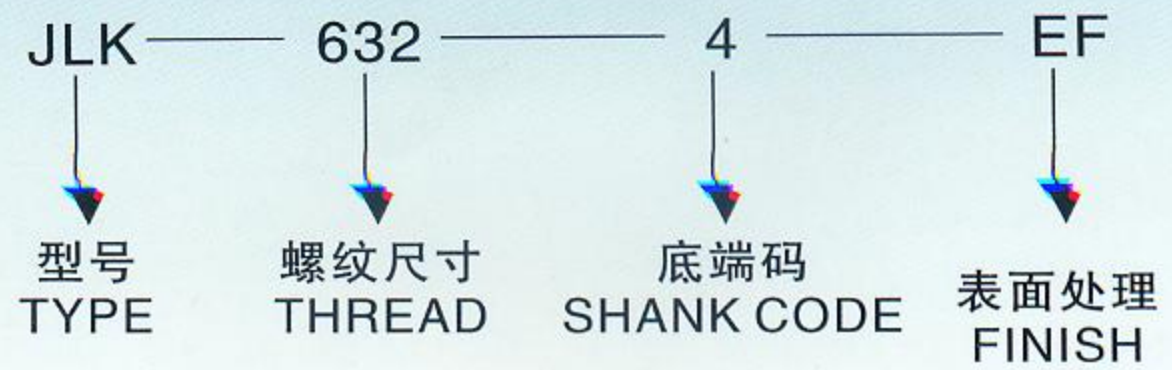




# 自锁螺母



尺寸单位:英寸  
All dimensions are in inches.

UNIFIED ( 英制 )	螺纹尺寸 Thread Size	型号 Type			螺纹码 Thread Code	底端码 Shank Code	A (Shank) Max.	最小板厚 Min. Sheet Thickness	安装孔 Hole Size In Sheet +0.003 -0.000	C Max.	D Max.	E Nom.	T ±.010	最小边距 Min. Dist Hole C/L To Edge
		碳钢 Carbon Steel	不锈钢 Stainless Steel	铝 Aluminum										
	.086-56 (#2-56)	JLK	JLKS	JLKA	256	1	.038	.040	.172	.171	.165	.250	.135	.156
						2	.054	.056						
	.112-40 (#4-40)	JLK	JLKS	JLKA	440	1	.038	.040	.187	.186	.185	.250	.135	.156
						2	.054	.056						
	.138-32 (#6-32)	JLK	JLKS	JLKA	632	1	.038	.040	.219	.218	.220	.312	.145	.187
						2	.054	.056						
	.164-32 (#8-32)	JLK	JLKS	JLKA	832	1	.038	.040	.266	.265	.250	.343	.175	.203
						2	.054	.056						
	.190-32 (#10-32)	JLK	JLKS	JLKA	032	1	.038	.040	.312	.311	.300	.375	.205	.218
						2	.054	.056						

尺寸单位:MM  
All dimensions are in millimeters.

METRIC ( 公制 )	螺纹尺寸 X 螺距 Thread Size x Pitch	型号 Type			螺纹码 Thread Code	底端码 Shank Code	A (Shank) Max.	最小板厚 Min. Sheet Thickness	安装孔 Hole Size In Sheet +0.08	C Max.	D Max.	E Nom.	T ±0.25	最小边距 Min. Dist Hole C/L To Edge
		碳钢 Carbon Steel	不锈钢 Stainless Steel	铝 Aluminum										
	M2.5X0.45	JLK	JLKS	JLKA	M2.5	1	0.97	1	4.37	4.35	4.45	6.35	3.43	3.9
						2	1.38	1.4						
	M3X0.5	JLK	JLKS	JLKA	M3	1	0.97	1	4.75	4.73	4.85	6.35	3.43	4
						2	1.38	1.4						
	M4X0.7	JLK	JLKS	JLKA	M4	1	0.97	1	6.76	6.73	6.2	8.73	4.45	5.2
						2	1.38	1.4						
	M5X0.8	JLK	JLKS	JLKA	M5	1	0.97	1	7.92	7.9	7.75	9.53	5.21	5.6
						2	1.38	1.4						

压  
铆  
系  
列